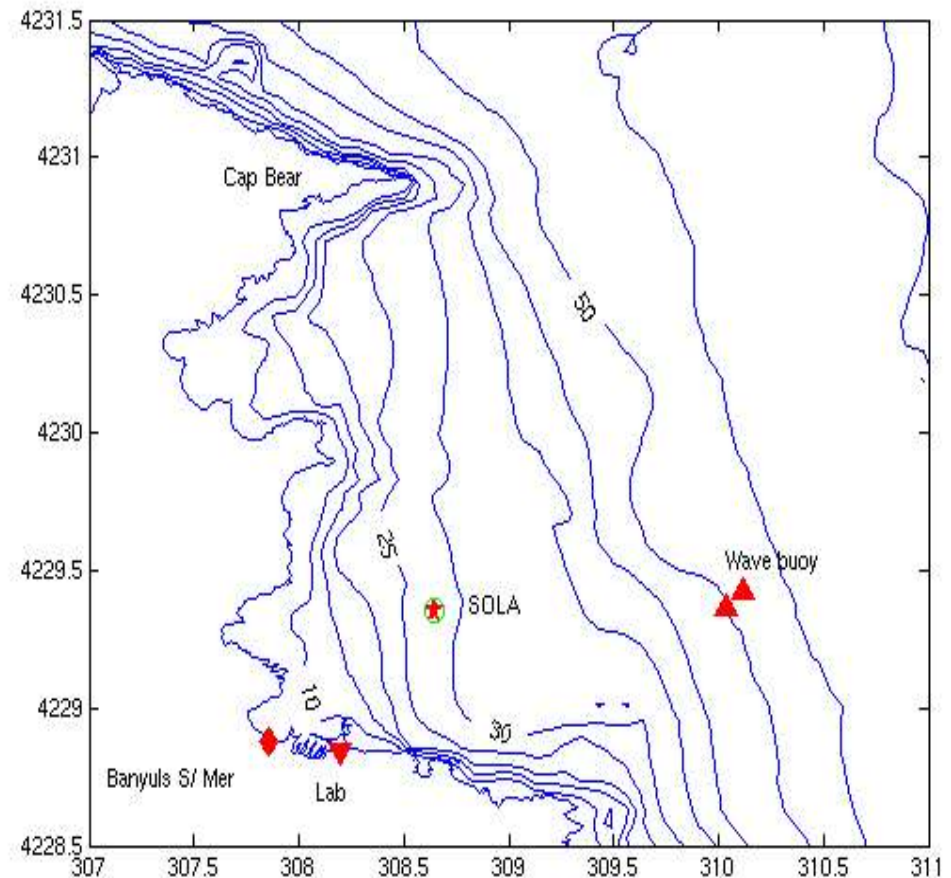


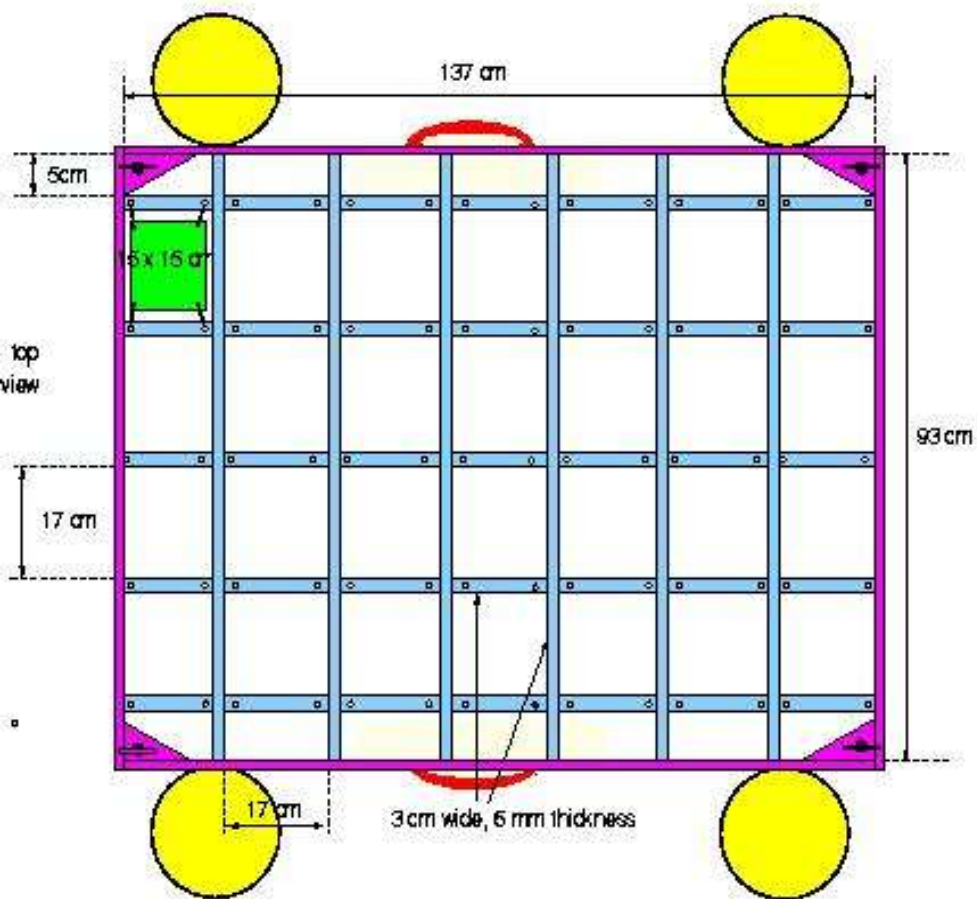
Frame deployment test in Banyuls

(K. Guizien, J.-C. Duchêne, Néréis II crew and scuba divers)

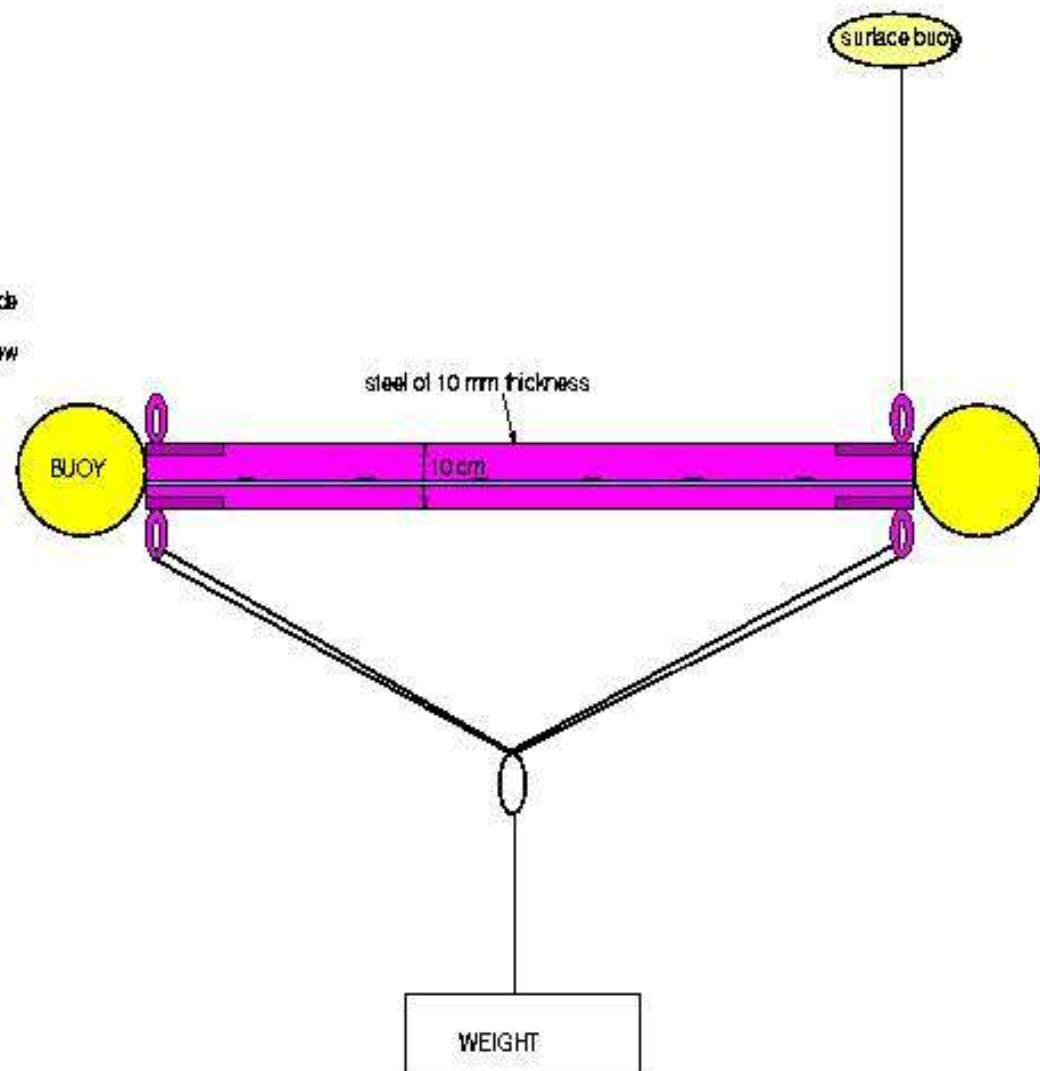
- deployed on
17/05/2006
- 6 PVC panels :
 - 3 scratched with
sand paper
 - 3 not scratched
- panels recovered on
07/06/2006



Recruitment Frame



side
view







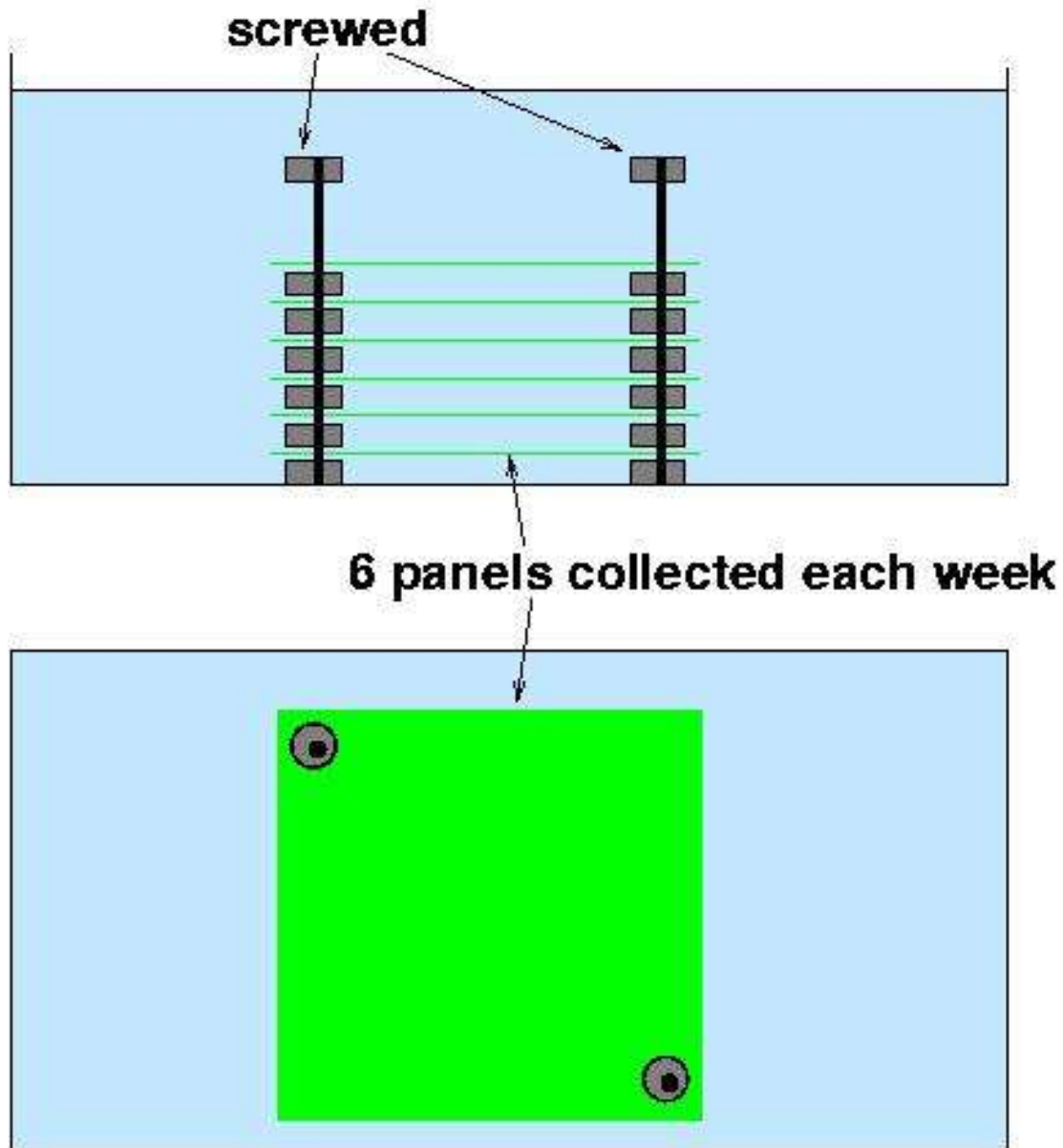








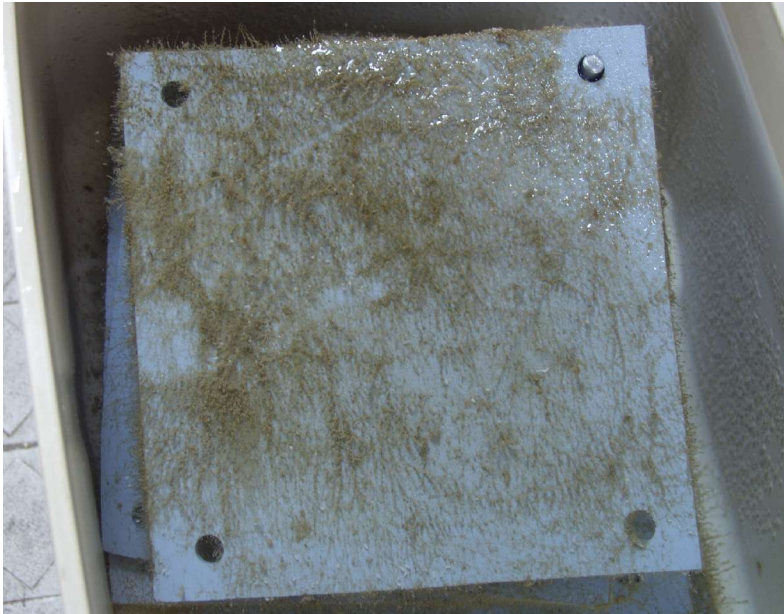
Collection device for scuba diver



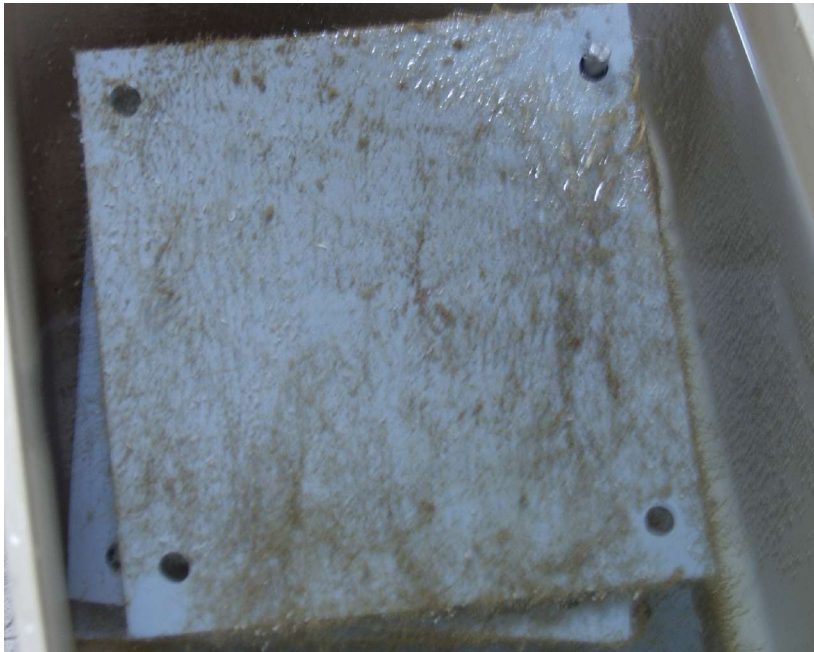
Scratched

Not scratched

Upper
face

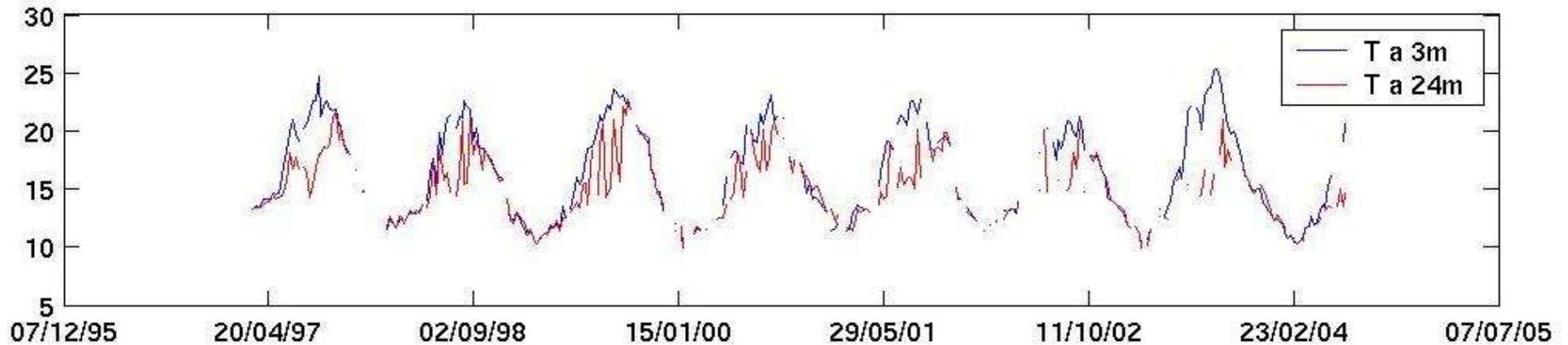


Lower
face

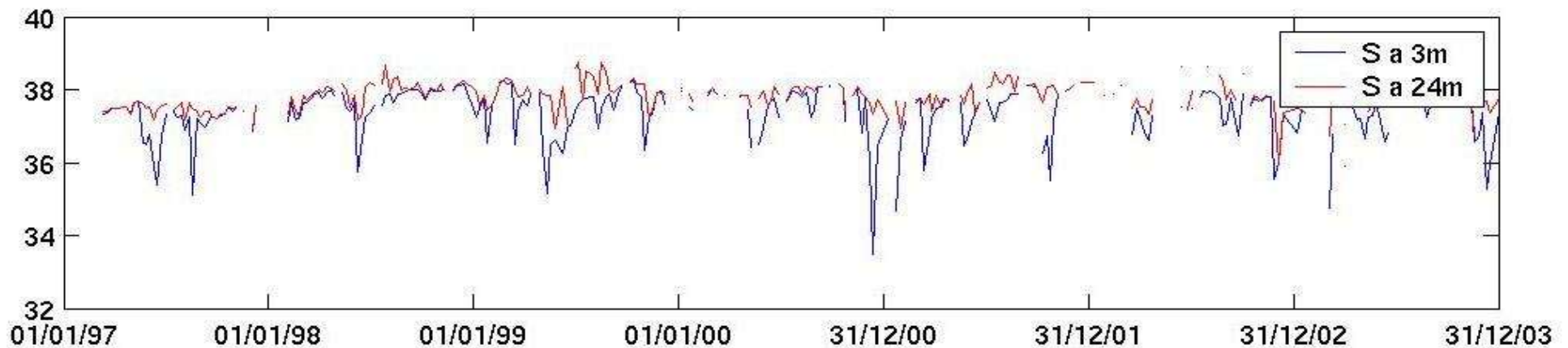


(T,S) conditions at SOLA point (SOMLIT network)

1997-2003



1997-2003



Vertical gradient in colonization

- Moorings (30 m) left at sea during 9 months
- Mussels on the upper part
- Serpulids on the lower part

